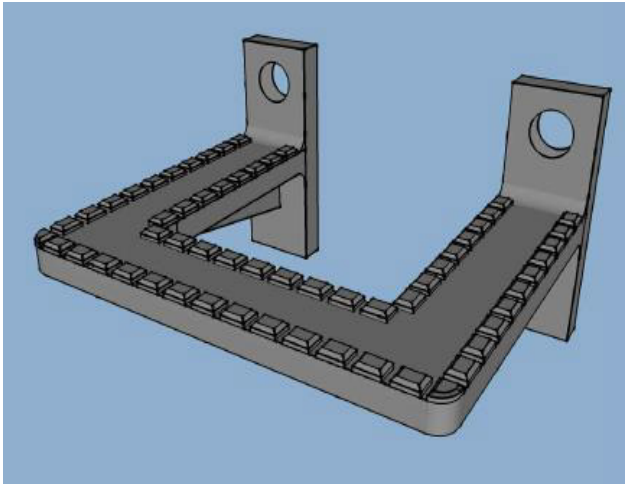


STEP MANHOLE NO.2

MANHOLE FURNITURE



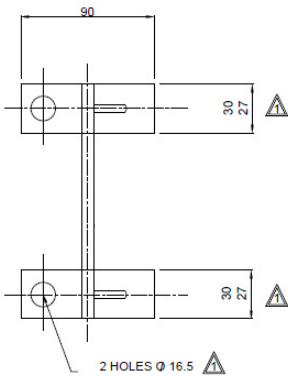
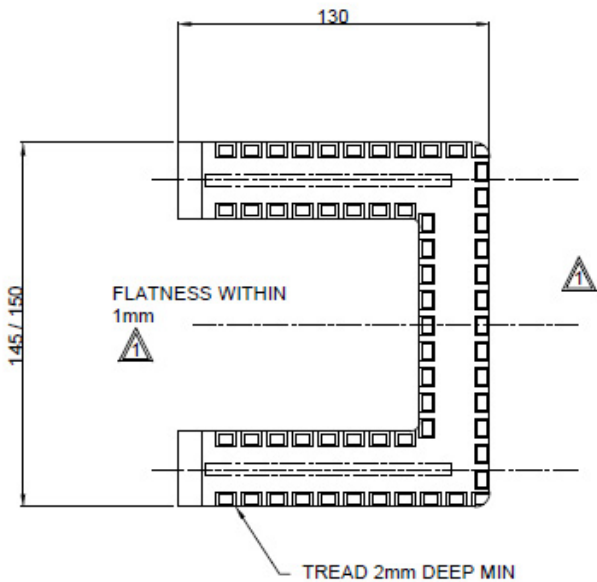
 Weight: 1.21kg

DESCRIPTION

Replacements for missing or broken steps in manholes, they are fixed to underground walls with Bolt Expansion 1A.

TECHNICAL SPECIFICATION

| | |
|---------------|---|
| Order Code | E3409 |
| Description | Step Manhole No.2 (Bolt on Step Irons) |
| Material | Malleable Iron to BS6681 Grade B35/12 or spheroidal graphite iron (ductile) complying with grades 500/7 or 600/3 of BS23789 |
| Finish | Galvanised to BS1461 |
| Tolerances | General Tolerance is +1.0 mm |
| Dimensions | See Below |
| Weight (each) | 1.21kg |



| CODE | MODEL | DIMENSIONS | WEIGHT |
|-------|-------------------|------------|---------|
| E3409 | Step Manhole No.2 | See Above | 1.21 kg |