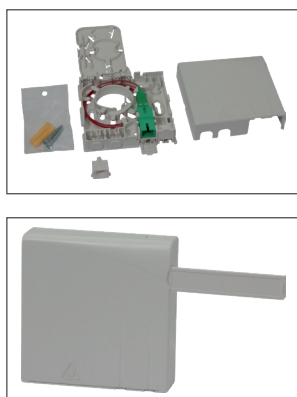


# CUSTOMER TERMINAL BOX PTO ONE



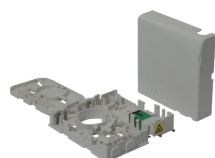
The Eline® PTO One has been developed to fulfill all the requirements of FTTH and FTTO networks. Its compact (80 x 80 x 20mm) and neat design allows to fit into any type of installation environment.

It also enables the storage of the fiber at two independent levels: bare and sheathed fiber. This offers a robust mechanical protection of the inner splices and makes the product easy to use.

Available with adaptor, adaptor and pigtail, pre-terminated with free end or pre-connectorized, the PTO ONE can adapt to all homes and offices configurations.

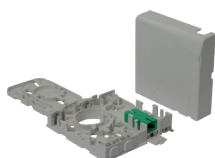
## VERSIONS

### PTO ONE



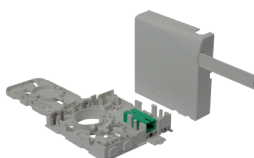
Integrated protective flap to the adaptor.

### PTO ONE Plus



Integrated protective flap to the terminal box.

### PTO ONE Plus ID



Integrated protective flap to the terminal box and retractable label holder.

## FEATURES

- Compact, neat and discreet design
- Bending radius control
- Multiple cable entries
- Enhanced mechanical protection
- Optimized time-mounting
- Easy re-operations
- Can be used as a transition box
- 3 different versions available

## TECHNICAL SPECIFICATION

- Capacity: 1 or 2 fibers (900µm)
- Bending radius: >15mm
- Tensile strength: > 5daN
- Optical performances (IEC-61300-3-4) : IL < 0.3dB  
RL < -60dB
- Protection index: IP40
- Shockproof: IK05
- Mounting plane: interaxe 60mm
- Material: ABS-PC
- Color: RAL 9010
- UV protected



Net weight: 0.6kg to 0.8kg (depending on version)



Product dimensions: L 80mm x D 80mm x H 20mm

### PTO ONE with SC/APC adaptor

CODE	MODEL	CAPACITY	PACKAGING
09989	PTO ONE	1FO	20
90911	PTO ONE	2FO	20
09990	PTO ONE Plus	1FO	20
90912	PTO ONE Plus	2FO	20
09991	PTO ONE Plus ID	1FO	20
90913	PTO ONE Plus ID	2FO	20

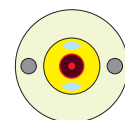
### PTO ONE with SC/APC adaptor and pigtail

CODE	MODEL	CAPACITY	PACKAGING
90908	PTO ONE	1FO	20
90914	PTO ONE	2FO	20
90909	PTO ONE Plus	1FO	20
90915	PTO ONE Plus	2FO	20
90910	PTO ONE Plus ID	1FO	20
90916	PTO ONE Plus ID	2FO	20

## ASSOCIATED PRODUCTS

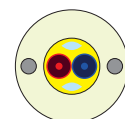
- Indoor/outdoor cable LM2

CODE	MODEL	Weight
90433	LM2 1FO G.657A2 / 250m	0.04kg



- Indoor/outdoor cable LM8

CODE	MODEL	Weight
90435	LM8 2FO G.657A2 / 250m	0.04kg



- Subscriber optical cord

CODE	MODEL	Weight
90334	Armored SC/APC 3.0m	0.04kg

