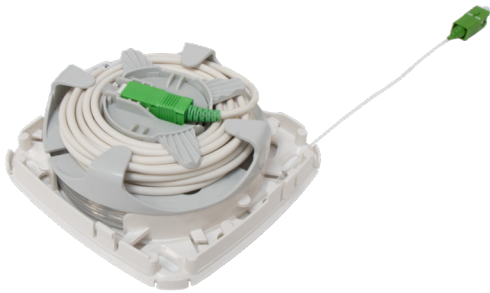


# ELINE® EXTENSION BOX TRANSPARENT CABLE 1FO 40M

## SC/APC - OPTICAL EXTENSION UNWINDING BOX




The eline® extension box is a small unwinder reel with 40m of discreet optical cable (Ø 0.9mm) on one side and 3m of 3mm cable on the other side. Both sides are SC/APC preconnectorised.

It allows to connect the optical network terminal to the point of entry of the customer premises.

Its also not necessary to manage an overlength of cable out of the box

The neat and elegant design of the box make it easy to fix everywhere inside the apartment.

The cable 0.9mm allows a discreet deployment inside the premises, almost invisible for the end-customer.

 Dimensions: 98mm x 98mm x 35mm

 Weight: 200gr

### FEATURES & BENEFITS

- Connection between ONT and Point Of Entry box
- Transparent cable 0.9mm to connect the POE
- 3mm cable to connect the ONT
- Small unwinder reel: protected cable overlength storage
- Neat design
- Bending radius secured



### TECHNICAL SPECIFICATIONS

- Box material: ABS/PC
- Box colour: White – RAL 9010
- Box dimensions: L 98mm x H 98mm x D 35mm
- 40m x transparent cable Ø 0.9mm Nylon sheat and 3m x Ø 2.8mm LSZH– white
- Optical Fibre compliant with ITU G.657B3
- Bend radius  $\geq 5\text{mm}$
- Connectors: SC/APC both ends
- Optical performances (IEC-61300-3-4):  $IL \leq 0.3\text{dB}$ ,  $RL 60\text{dB}$
- Operating temperature:  $-5^{\circ}\text{C}$  to  $45^{\circ}\text{C}$



### INFORMATION FOR ORDER

CODE	MODEL	PACKAGING	PALETTE
1005458	Optical Extension box SC/APC transparent cable Ø 0.9mm 40m + 3m Ø 2.8mm	80 pcs	1920 pcs