

# 1.25mm & 2.5mm FERRULE CLEANING SWABS TED®

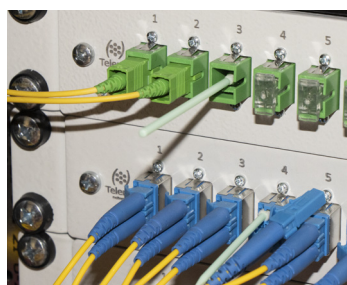


30064

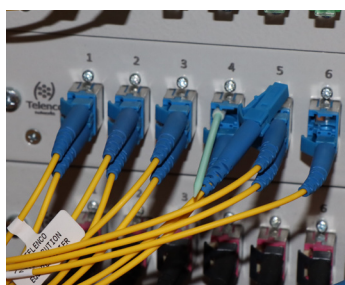


30065

The 1.25mm (LC, MU) and 2.5mm (SC, ST, FC) ferrule cleaning swabs are one of the key tool for optical fiber faces decontamination of the various connection points (patch panels, OAP, OTO). Connectors contamination leads to more or less significant signal losses, which is the 1st fault source on FTTX networks. It may result in massive loss of money due to engineer's re-intervention and the risk of financial penalties for the contractor. The cleaning swabs allow dry and then wet cleaning (after being soaked in isopropyl alcohol) of the ferrules. The combination of these two methods is the most effective to ensure effective decontamination.



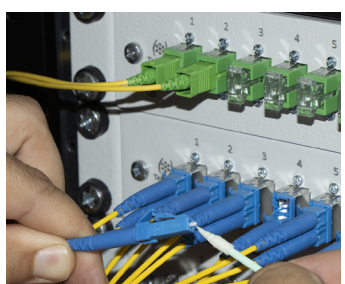
Cleaning of an SC/ST connector



Cleaning of an LC/MU connector



Cleaning a 2.5mm SC/ST/FC ferrule



Cleaning a 1.25mm LC/MU ferrule

PN	DESCRIPTION	CONDT
30064	TED® Cleaning swabs for 1.25mm ferrules (LC, MU) /QTY 50	50pcs
30065	TED® Cleaning swabs for 2.5mm ferrules (SC, ST, FC) /QTY 50	50pcs

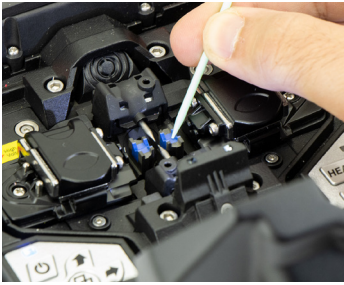
## ADVANTAGES

- Wet and dry 2-in-1 cleaning solution to decontaminate optical faces
- Swabs could also be used to realise the maintenance of your fusion splicer

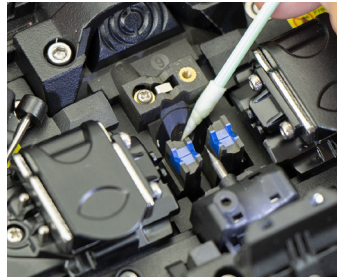
## TECHNICAL SPECIFICATION

- Rigid swab in Polypropylene
- Lint-proof terry foam tip
- 2 models to clean most of optical faces 1.25mm (LC/MU) and 2.5mm (SC/ST/FC)

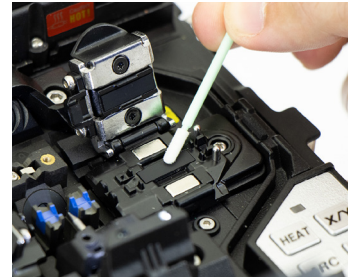
## CLEANNING OF AN OPTICAL FUSION SPLICER



Cleanning the v-groove



Cleanning the mirrors



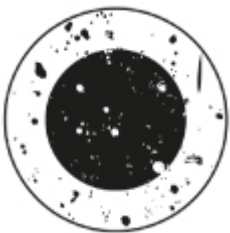
Cleanning of the holders

## ADDITIONAL PRODUCTS



The TED® Optical Microscope is a high-quality single-mode and multi-mode fiber inspection tool with 400x zoom. Equipped with a white LED light, it can inspect optical connectors and detect the presence of dust and contamination defects. The microscope has two screw-on adapters for 2.5mm and 1.25mm ferrules.

PN	DESCRIPTION
33007	TED® 400x Optical Microscope



Connector saturated with dust and residue



Connector after dry cleaning



Connector after wet cleaning